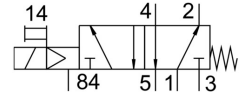


Air solenoid valve

VUVS-L20-M52-MD-G18-F7-1C1

FESTO

Part number: 575264



Data sheet

Feature	Value
Valve function	5/2, monostable
Actuation type	Electrical
Valve size	21 mm
Standard nominal flow rate	700 l/min
Pneumatic working port	G1/8
Operating voltage	24V DC
Operating pressure	2.5 bar ... 10 bar
Structural design	Piston gate valve
Reset method	Mechanical spring
Certification	c UL us - Recognized (OL)
Degree of protection	IP65 With plug socket as per IEC 60529
Nominal width	5.7 mm
Type code	VUVS
Exhaust air function	With flow control option
Sealing principle	Soft
Mounting position	Any
Manual override	Detenting Non-detenting
Type of control	Pilot-controlled
Pilot air supply port	Internal
Flow direction	Non-reversible
Symbol	00991035
Lap	Overlap
b-value	0.35
C value	2.9 l/sbar
Switching time off	44 ms
On switching time	12 ms
Duty cycle	100%
Max. positive test pulse with 0 signal	1900 µs
Max. negative test pulse on 1 signal	2700 µs
Coil characteristics	24 V DC: 2.6 W
Permissible voltage fluctuations	+/- 10 %
Operating medium	Compressed air as per ISO 8573-1:2010 [7:4:4]
Information on operating and pilot media	Operation with oil lubrication possible (required for further use)

Feature	Value
Vibration resistance	Transport application test with severity level 2 as per FN 942017-4 and EN 60068-2-6
Shock resistance	Shock test with severity level 2 as per FN 942017-5 and EN 60068-2-27
Corrosion resistance class (CRC)	2 - Moderate corrosion stress
Temperature of medium	-10 °C ... 60 °C
Pilot medium	Compressed air as per ISO 8573-1:2010 [7:4:4]
Ambient temperature	-10 °C ... 60 °C
Product weight	217 g
Electrical connection	Form C as per EN 175301-803
Type of mounting	Optionally: On terminal strip With through-hole
Venting hole connection	Not ducted
Pilot exhaust air port 84	M5
Pneumatic connection 1	G1/8
Pneumatic connection 2	G1/8
Pneumatic connection 3	G1/8
Pneumatic connection 4	G1/8
Pneumatic connection 5	G1/8
Note on materials	RoHS-compliant
Seals material	HNBR NBR
Housing material	Die-cast aluminum Painted
Piston slide material	Wrought aluminum alloy
Material of screws	Steel, galvanized